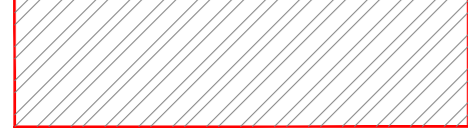
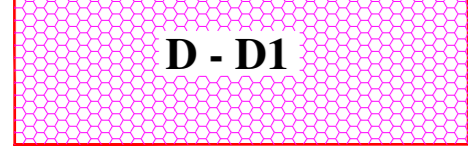
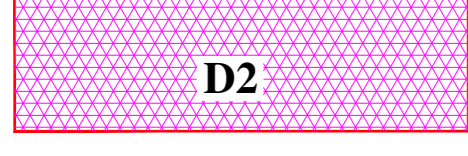
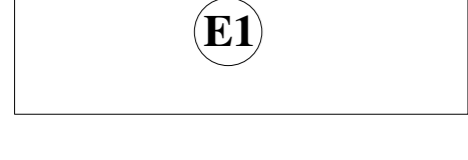


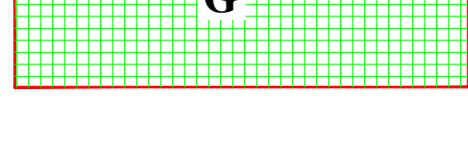
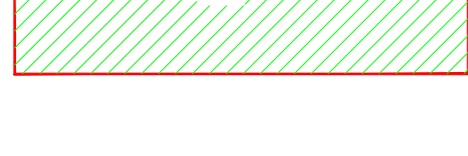
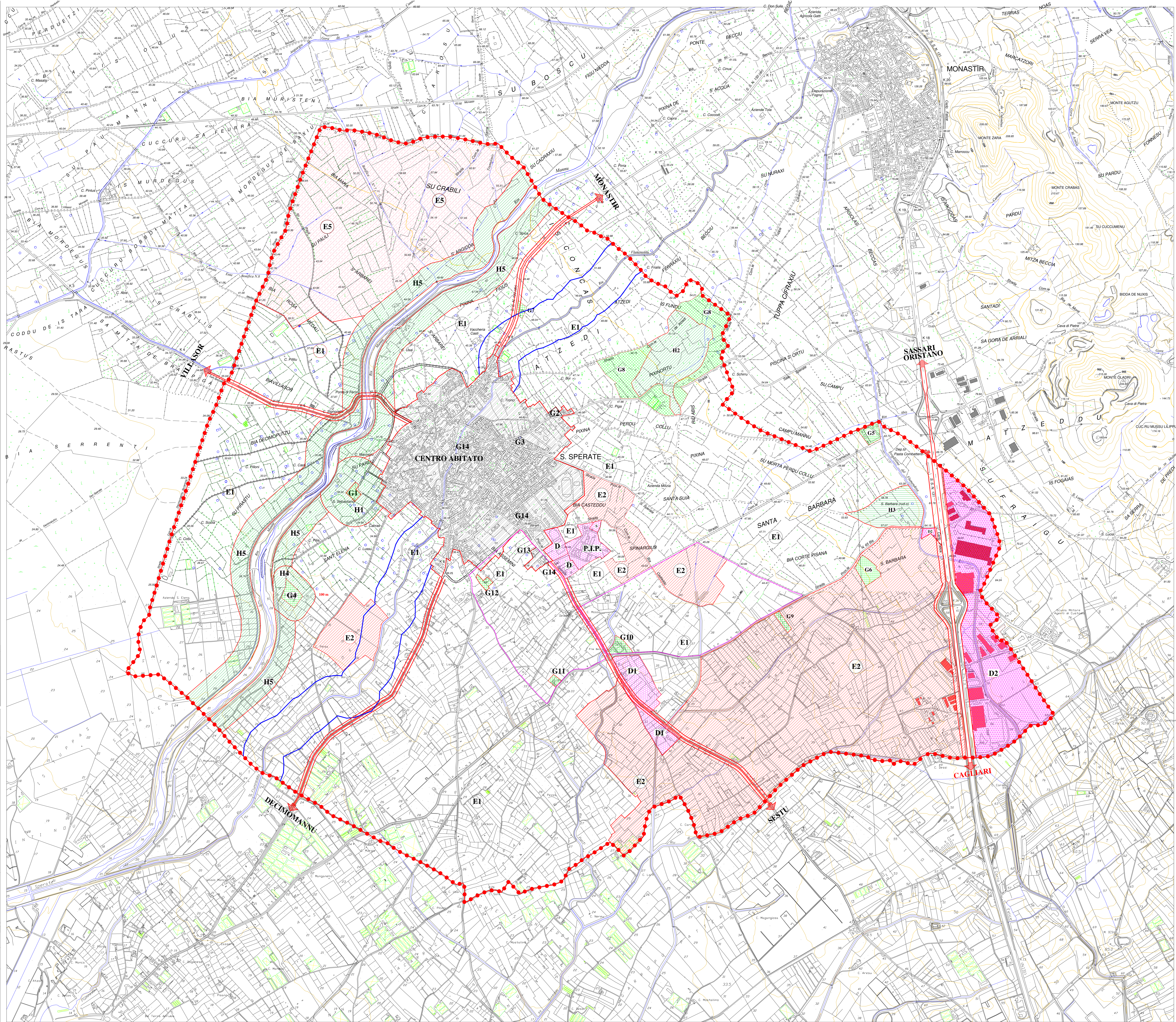


LEGENDA

- CENTRO ABITATO 
- ZONA D: ARTIGIANALE- COMMERCIALE  **D - D1**
- ZONA D: COMMERCIALE - INDUSTRIALE  **D2**
- ZONA E1 - AGRICOLA  **E1**
- ZONA E2 - AGRICOLA  **E2**
- ZONA E5 - AGRICOLA  **E5**
- ZONA G  **G**
- ZONA H  **H**
- PISTE CICLABILI
- VIABILITA' PRINCIPALE
- CONFINI TERRITORIO COMUNALE
- LIMITE FASCIA DI RISPETTO FLUVIALE
- LIMITE FASCIA DI RISPETTO NASTRO STRADALE



COMUNE DI SAN SPERATE (CA)

Variante al Piano Urbanistico Comunale per il cambio di destinazione urbanistica di un'area, attualmente in zona E (agricola), in zona G, sita in loc. "Sa Nuscedda" e distinta nel N.C.T. al Foglio 20 mapp. 448.

OGGETTO TAVOLA:		TAVOLA:
-TAV. 5 PLANIMETRIA TERRITORIO COMUNALE- -P.U.C VIGENTE- ANNO 2002		1
COMMITTENTE:	ARCHIVIO:	SCALA:
	109	1:10.000
ELABORAZIONE GRAFICA:		DATA:
		19/01/2015
IL PROGETTISTA:		
ING. ANTONIO LEFORI		
		